

Legend

- Site boundary
- 100m assessment boundary
- Cadastral boundary
- Subdivision layout

Bushfire attack level

Permanent BALs

- BAL - FZ
- BAL - 40
- BAL - 29
- BAL - 19
- BAL - 12.5
- BAL - LOW

Temporary BALs

- BAL - FZ
- BAL - 40
- BAL - 29
- BAL - 19
- BAL - 12.5



Figure 10: BAL Contour Plan

Project: Bushfire Management Plan
Peregrine Estate, Piara Waters

Client: Zivalia Pty Ltd

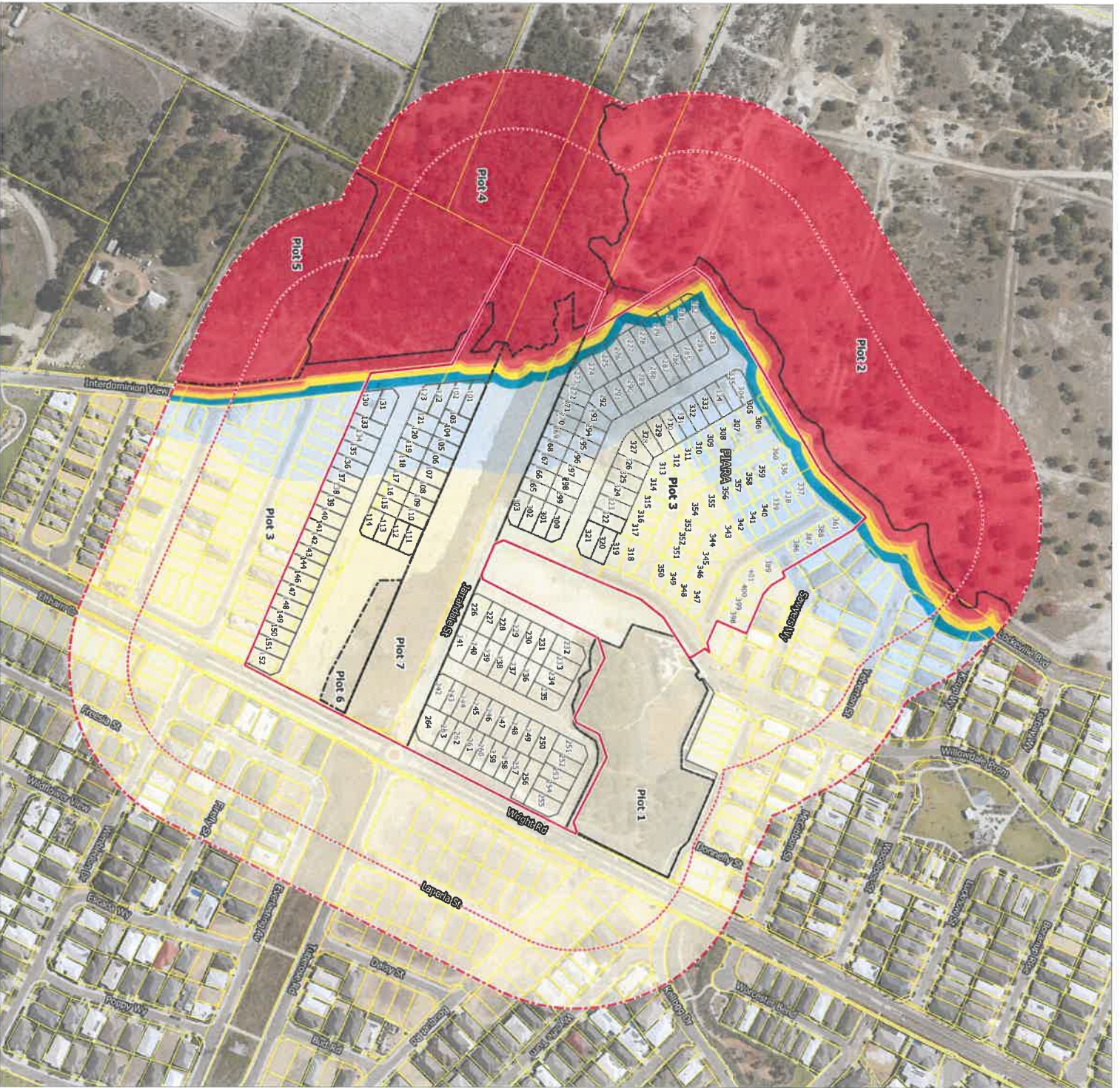


Plan Number: EP16-070(05)--F17

Drawn: KNM	Date: 14/10/2016
Approved: JL	Date: 17/10/2016
Checked: VMK	Scale: 1:3,500@A4

0 50 100 Metres

While Emmerge Associates makes every attempt to ensure the accuracy and completeness of data, Emmerge accepts no responsibility for externally sourced data used.



Legend

- Site Boundary
- 100m BAL Assessment Area
- 150m Vegetation Assessment Area
- Proposed Development Layout

BAL Contour

- BAL FZ
- BAL 40
- BAL 29
- BAL 19
- BAL 12.5
- BAL Low

Scale 1: 4,000

0 50 100 150 Metres



GIS Pro
Data to Precision
www.gispro.com.au
info@gispro.com.au

Western Property and Qube

Peregrine Final Stage & Piara Stages 8 to 10

BAL Contour Map

© 2020. Whilst every care has been taken to prepare this map, GIS Pro makes no representation or warranty about its accuracy, reliability, completeness or suitability for any purpose. The user of this map is advised to verify the accuracy of any data (whether in context, out of context or otherwise) for any purposes, losses, damages and/or costs (including indirect or consequential damages) which are or may be incurred by any party as a result of the map being inaccurate, incomplete or unusable in any way and for any reason. Date printed: 2020-05-08.